



[About](#) [Services](#) [Projects](#) [Contact Us](#) [Shipping Container Buildings](#)



A Very Busy Year

It's been almost a year since I last sent out the newsletter, things have been very busy. We've expanded to 6 people now, and that doesn't count subcontractors we're using on an as-needed basis. We've got projects going on all over the country, and we've had to make a lot of changes.

A few things that we've got going on:

1. We have not expanded our office space. Office space is expensive, and I'm not really excited about moving. So, we're trying to make use of remote work as much as possible. Unfortunately, some days it feels like we're sitting on top of each other. Still, the remote work has turned out to be a better alternative in my opinion than expanding square footage.
2. We're traveling somewhat. Travel is expensive, and can be exhausting and aggravating. Still, actually going to meet the client and getting on site is often the only way to get things done.
3. We've had to quit doing residential evaluations. There are a number of issues with doing that work, and we found it was disturbing our work on other projects.
4. Very little of our work is in Georgia anymore. We're doing a lot of work in Arizona, and in Michigan (Detroit mainly).

In this newsletter, we're going to cover one of our latest projects, the Phoenix Navigation Center.

By leveraging our expertise, we ensured that the Phoenix Navigation Center's foundation design not only met the necessary safety standards but also provided a strong and secure base for the entire complex. This attention to detail and commitment to excellence reflects our dedication to delivering high-quality structural design solutions.

Beyond the foundation design, the container structures underwent meticulous planning and design. The containers were transformed into private counseling rooms, communal areas, administrative offices, and sleeping quarters. The integration of sustainable features such as energy-efficient lighting, insulation, and ventilation systems further enhanced the functionality and comfort of these spaces.

The Phoenix Navigation Center exemplifies the potential of collaboration and sustainable design practices. The involvement of Runkle Consulting, Inc in this project is a testament to our commitment to community-driven initiatives and the belief that thoughtful design can positively impact lives.

Moreover, the success of the Phoenix Navigation Center has been fueled by the unwavering support and collaboration of the community. Local businesses and organizations have contributed their resources, volunteer services, and employment opportunities to the center, reinforcing the power of collective action in addressing social challenges.

The Phoenix Navigation Center stands as a beacon of hope and compassion. It provides not only immediate assistance to those in need but also a path towards stability, healing, and community reintegration.

We extend our heartfelt gratitude to all the organizations, individuals, and community members involved in making this visionary project a reality. Together, we have demonstrated that through sustainable design and collaborative efforts, we can transform lives and create lasting change.

As a community, let us continue to support initiatives that uplift and empower individuals, ensuring that everyone has access to the support they need to thrive.

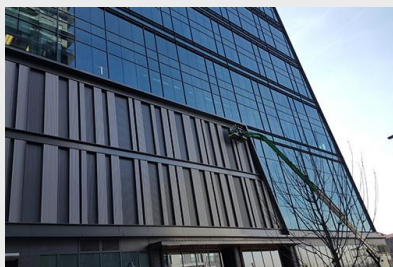


Structural Engineers

Runkle Consulting was founded in 2000 by George W. Runkle III, PE, SE. We provide structural design for structures fabricated from shipping containers, the structural design for building cladding, and forensic engineering services.

[Contact Us](#)

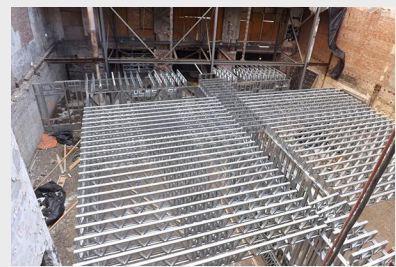
What We Do



Building Cladding



Shipping Container Buildings



Cold Formed Steel Design

We have 15 years of experience in the structural engineering of exterior building panels, store fronts, and curtain walls for commercial and government buildings.

We provide design services for the design of buildings fabricated from repurposed shipping containers. Our services include the complete design package, architectural, structural, and MEP. Depending on the area, we may be able to help you find a fabricator to provide the containers.

We have extensive experience in cold formed steel design. We can provide structural design services and shop drawings for your project.

CONTACT US

P.O. Box 702 Grayson, GA 30017
georger@runkleconsulting.com
(678) 225-4900



Runkle Consulting Inc. | 512 Grayson Parkway | Grayson, GA 30017 US

[Unsubscribe](#) | [Update Profile](#) | [Constant Contact Data Notice](#)



Try email marketing for free today!