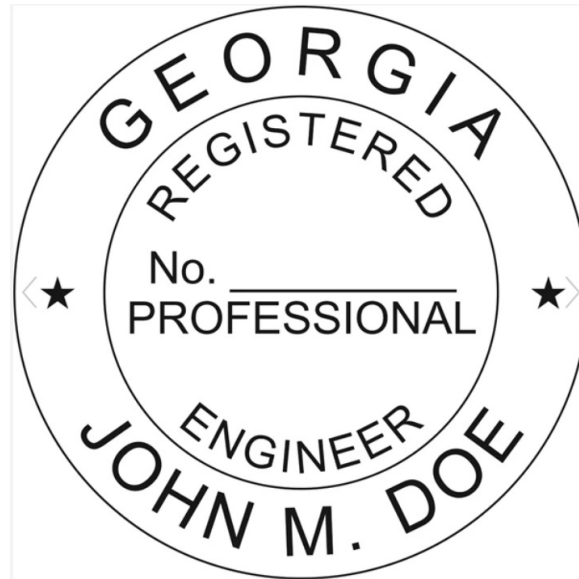




RUNKLE CONSULTING, INC.

Like this issue? [Click here if you'd like to provide feedback!](#)



Today's Mentorship for Tomorrow's Engineers

What do engineers have in common with doctors, lawyers, and members of the military? They are considered to work in "professions" rather than "jobs" to signify the constant learning and mentorship that is required in these fields.

George W Runkle III, S.E., P.E. has been a licensed Professional Engineer since 1987. In the last 38 years, he has worked with countless members of the engineering field who were either senior and junior to him in terms of engineering experience. As a result, he recently was selected to speak to Grayson High School's

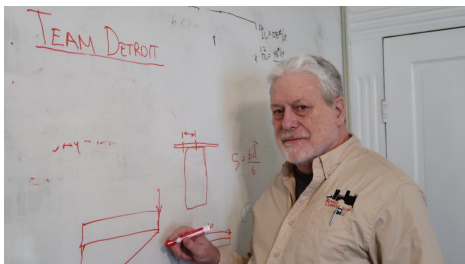
DECA club (<https://www.deca.org>) and selected as a student at Gwinnett School of Math, Science, and Technology - the highest rated high school for academics in the state of Georgia and rated 9th overall in the United States.

The constant learning is a key feature of being an engineer. Not only are there constant changes in Codes and Technology, but the Market brings us different types of work that requires updating of skills to handle the different projects. We work to keep up with Code changes through courses offered by the American Society of Civil Engineers, the American Institute of Steel Construction, and National Council of Structural Engineer Associations.

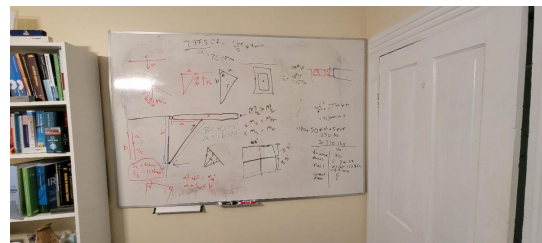
Fortunately, the various seminars can be obtained over the Internet, unlike not too many years ago when you had to attend in person. It always seemed those seminars were in a difficult location to reach, required leaving home at an inconvenient hour, and the room was always too cold. However, we still attend some seminars in person, such as those hosted by Chance Piers on a regular basis.

Sometimes the learning involves updating educational credentials later in life, Mr. Runkle obtained his Master of Science in Civil Engineering from Columbia University, New York at age 61. Going to grad school at that age presents an interesting experience in learning, and its own challenges.

We have to keep up our continuing education as a condition of licensing in most states, but we generally go well above and beyond what is the minimum requirements for our education to keep ourselves in front of the pack.



George W Runkle III, S.E., P.E. and President of Runkle Consulting explains the math behind a design to a pair of EITs (Engineers in Training)



Daily discussions of engineering problems happen around our all-important white board.



A hands-on exercise to better understand the basic principles of designing structures using refurbished shipping containers

Customer Spotlight - Amy Kunkle Creative



Amy Kunkle, Architect and Founder of Amy Kunkle Creative

"Runkle" is not a common last name. So, we get pretty excited anytime we meet someone with a similar last name. Last year, we did a project for Amy Kunkle Creative, an architecture firm in Canton, Ohio.

Amy Kunkle Creative was started in May 2024 and has rapidly grown to the point where she has now hired her first employees.

Like so many of our other customers, Amy Kunkle Creative focuses on projects using Guardian Shield wall and roof panels which are EPS (foam) and light-gage steel. The projects range from single-family homes to university buildings, but they are all energy efficient and constructed with Shield panels.

Amy is currently licensed in Ohio, but open to projects in other states if customers want to use Guardian Shield panels. She can be reached at amykunkledesign@gmail.com or



CONSCIOUS LIVING
BY DESIGN

www.amykunkle.com

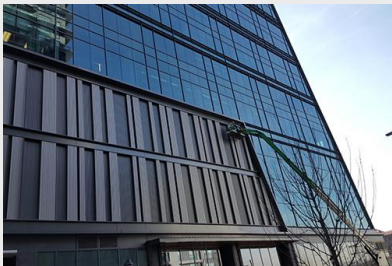


Structural Engineers

Runkle Consulting was founded in 2000 by George W. Runkle III, PE, SE. We provide structural design for structures fabricated from shipping containers, the structural design for building cladding, and forensic engineering services.

[Contact Us](#)

What We Do



Building Cladding

We have 15 years of experience in the structural engineering of exterior building panels, store fronts, and curtain walls for commercial and government buildings.



Shipping Container Buildings

We provide design services for the design of buildings fabricated from repurposed shipping containers. Our services include the complete design package,



Cold Formed Steel Design

We have extensive experience in cold formed steel design. We can provide structural design services and shop drawings for your project.

architectural, structural, and MEP. Depending on the area, we may be able to help you find a fabricator to provide the containers.

[YouTube](#)

[Website](#)

[LinkedIn](#)

CONTACT US

P.O. Box 702 Grayson, GA 30017
info@runkleconsulting.com
(678) 225-4900



Runkle Consulting Inc. | 512 Grayson Parkway | Grayson, GA 30017 US

[Unsubscribe](#) | [Update Profile](#) | [Constant Contact Data Notice](#)



Try email marketing for free today!